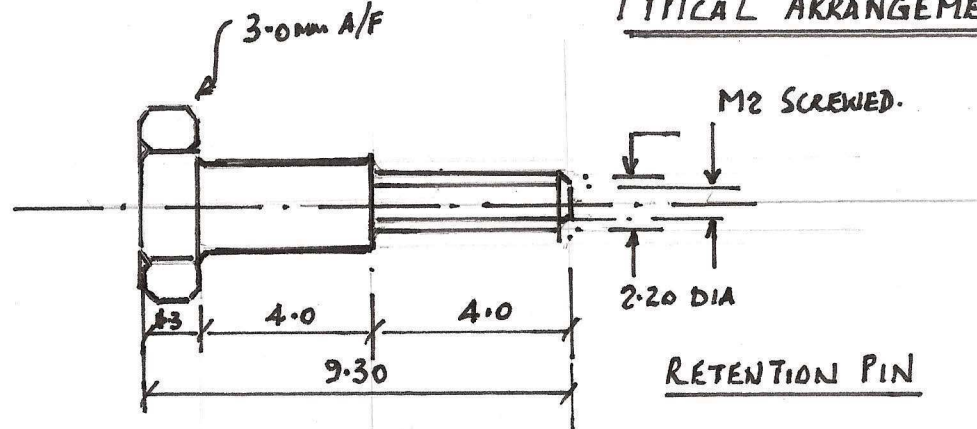


RIVAROSSA L.S.P/R SOUTHERN PACIFIC ATLANTIC

TYPICAL ARRANGEMENT FOR VALVE GEAR PARTS

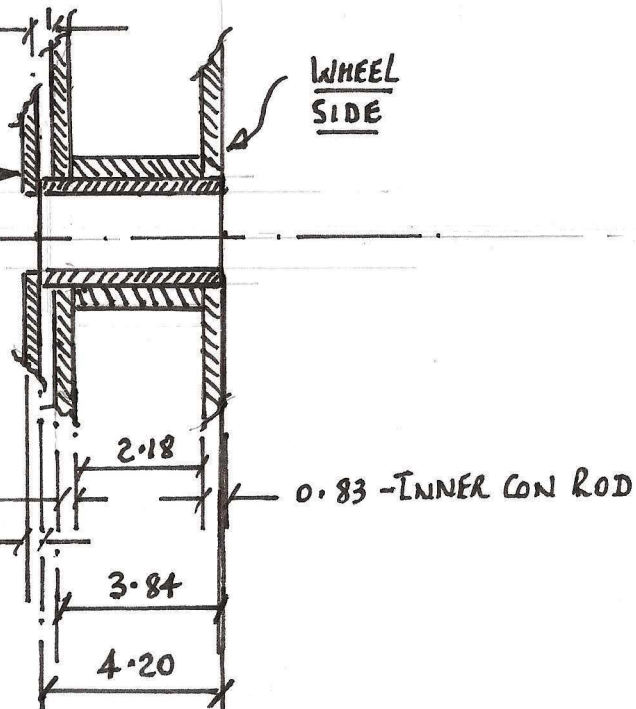


CLEARANCE  
0.35 MM.

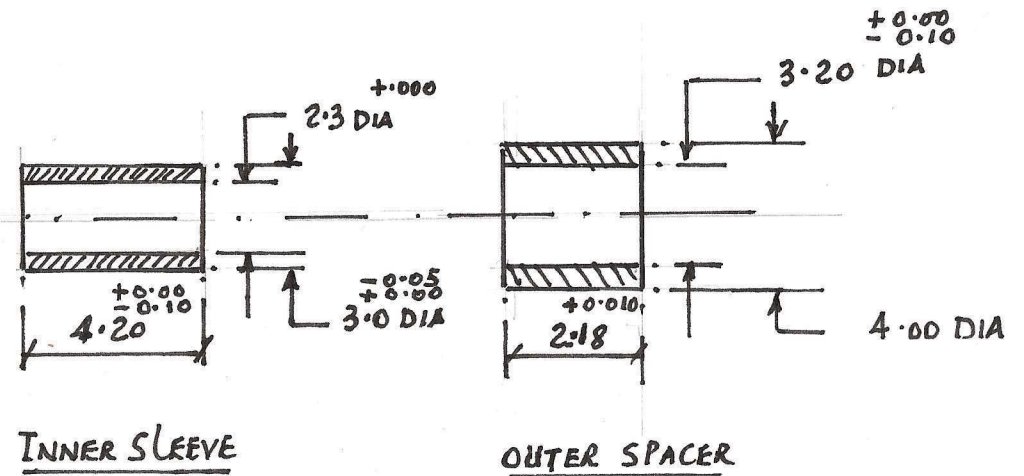
WHEEL  
SIDE

ROTATING  
ECCENTRIC  
MUST BE  
TIGHT AGAINST  
INNER SLEEVE.

OUTER CON = 0.83  
ROD  
0.70



MATERIAL: PLATED BRASS.



NOTE - NOT TO SCALE

IMPORTANT THERE MUST BE CLEARANCE  
BETWEEN OUTER CONNECTING ROD AND  
ROTATING ECCENTRIC.

H. K. RAE.

24/05/2011